

# Upper East Side townhouse that inspired 'Harriet the Spy' is in contract

*The gorgeous Queen Anne townhouse on East 87th Street allegedly inspired author Louise Fitzhugh*

This stunning Upper East Side townhouse has a quirky literary side: it's rumored to be the home that inspired Louise Fitzhugh, author of the beloved children's book *Harriet the Spy*, to have her titular character live on East 87th Street. (Fitzhugh lived only a few blocks away on East 85th Street.) It hit the market earlier this year with an asking price of \$4.95 million, and now, just a few months later, it's already in contract. (No word yet on who the buyer is, but perhaps they're a *Harriet* aficionado lured in by the home's pedigree?)

The house itself is a beaut: a late-19th-century Queen Anne townhouse with lovely brickwork and original ornamentation, and five bedrooms spread out over nearly 3,000

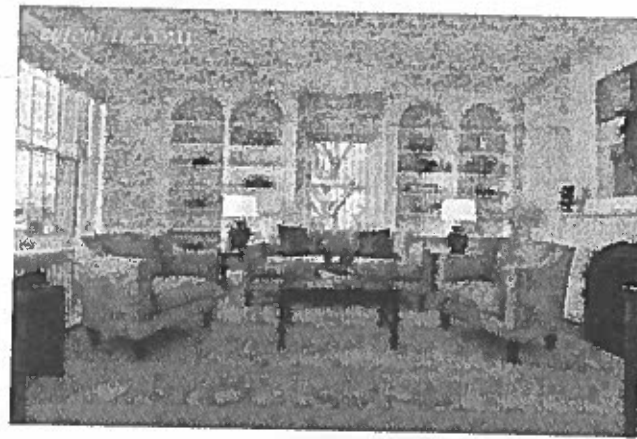
square feet of space. The interiors got a thoughtful upgrade at some point, and include a light-filled eat-in kitchen, a lovely old staircase with a skylight, and custom built-ins (the better to store one's collection of children's books, maybe?). There's also a dumbwaiter, which is just a fun old detail.

# 558 East 87th Street

# \$4,950,000

Between Eea and York Avenue  
Upper East Side

Annual Taxes



<http://devi>

## Overview

The Wexler Team is thrilled to announce our new exclusive townhouse listing for sale at 558 East 87th Street.

Almost seventy years have elapsed since this rare Queen Anne-style townhouse has been on the market. Occupying the southwest corner of East 87th Street and East End Avenue in one of NYC's quietest neighborhoods, it offers extraordinary light, thoughtfully meticulous renovation and exceptional views of Gracie Mansion, Carl Schurz Park, and New York City's East River.

Situated on the Upper East Side of Manhattan this historically significant townhouse, built in the early 1880's still retains its picturesque charm and original character. It enjoys an outstanding corner location as part of the Henderson Place Historic District. A short walk from the front door takes you to the beautifully planted gardens of Carl Schurz Park, its meandering walks, spacious playgrounds, and dog runs, as well as spectacular views from the East River Esplanade.

Today this unique, four-story, single-family residence offers an inviting center hall entrance, three exposures to the North, East, and West; generously proportioned rooms, high ceilings, a formal living room and dining room, a windowed eat-in kitchen, five bedrooms, 3.5 bathrooms, as well as a wrap-around garden on East 87th Street and East End Avenue. An intimate backyard offers a place to relax.

Additional features of this property include: Built-in bookcases on every floor, Two pantries, one with a dual-zone wine cooler, Dumbwaiter connecting dining room to kitchen pantr, Center hall skylight & two additional top-floor sk, Custom radiator covers, A service hall providing access to the street, Neighborhood garages, open 24/7 w/ monthly parking, Nearby access to FDR Drive & buses, subways & cabs, More-than-ample closet and storage space, and Apacious laundry & utility room w/ additional stor.

## Essentials

Price	\$4,950,000
Type	Townhouse
Unit	1
Floors	4
Bedrooms	5
Bathrooms	3.5
Rooms	9
Approx Sq Ft	3,000

## Key Features

Decorative fireplaces	Hardwood floors
Dining room	Modern kitchen
Dishwasher	Prewar detail
Excellent light	Renovated bathroom
Full park view	Washer/dryer
Full river view	
Garden	
Great closet space	



## HARRIET'S SPY ROUTE



1. Agatha K. Plumber
2. Dei Santis' Grocery Store
3. The Robinsons
4. Harrison Withers

## IMPORTANT LOCATIONS

- Harriet's brownstone
- Gregory School
- Carl Schurz Park
- Gracie Mansion

## OTHER RESIDENCES



- A. Pinky Whitehead
- B. Rachel Hennessey
- C. Janie Gibbs
- D. Sport